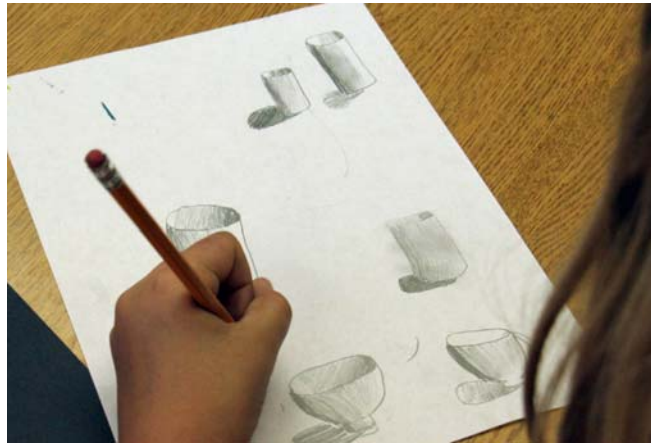
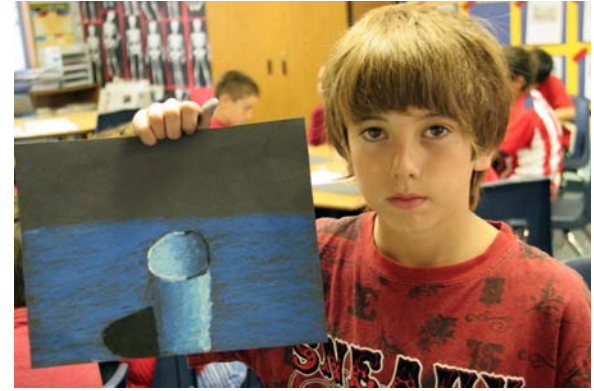


**Shade and Shadow Bowls
Inspired by Claude Monet
April 2009**



Happy Harlequin – Bubble People
Inspired by Henri Matisse
February 2009



Still Life Collage
Inspired by Cezanne
January 2009



Simple Perspective Student's Works November 2008



Color Wheel and Tree
October 2008



MARGUERITE



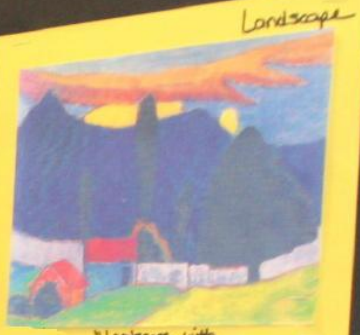
"Portrait of Marguerite" 1906



ANIMAL PORTRAIT



ANIMAL PORTRAIT



"Landscape with white wall" 1910



"PARK NEAR Lucerne" 1939

STEPS

- 1- Chose your "Great Work"
- 2- Can Use black strips to make a smaller composition
- 3- Lower Grades use Tempura Paint.
- 4- Pencil - sketch lightly the basic layout.
- 5- Use lg brushes - background
sm brushes - for detail
- 6- Use quarter size point only
Rinse brushes well, store w/ brush up

GREAT WORKS OF ART

ABSTRACT PORTRAIT



PICASSO "Woman with cap" 1934

STILL LIFE



"Bowl of Lemons" 1890-1893

STILL LIFE



"The Vase" 1915

Color Chart

- R + Y = ORANGE
- B + Y = GREEN
- R + B = VIOLET
- White - lightens
- Black - darkens
- Brown = R + B + Y
- R = Red
- B = Blue
- Y = Yellow



Lines and Shapes Inspired by Wassily Kandinsky

